

PSD
PSLE.SBB.DSA



SAST
STUDENTS WITH ACADEMIC
STRENGTHS AND TALENTS



OVERVIEW

01

Students with
Academic
Strengths
and Talents
(SAST)

02

All About
PSLE

03

Subject-
Based
Banding in
Primary
School

04

Direct
School
Admission
(DSA)



STUDENTS WITH ACADEMIC STRENGTHS AND TALENTS (SAST)



GROWING YOUR CHILD'S TALENTS



- Every child has a different strength; they should not be expected to be strong in all areas.
- Your child's talents will grow throughout their entire life, with the right support – accelerating the process may cause more harm than good.
- Support your child's natural development – nurture his or her joy in learning and intrinsic motivation.
- Primary schools offer opportunities for discovery of strengths, while secondary schools offer multiple pathways to develop different talents and interests, as students' strengths and talents become more obvious.



REFRESHED APPROACHED – SAST

Refreshed Approach to Support Primary Students with Academic Strengths & Talents

Identification & Selection



Standardised one-stage identification exercise at P3
Focus on English and Math



Ongoing identification at upper primary years using multiple sources of information like teacher observations and student work



Remain in own school instead of transferring to a GEP school

Within School

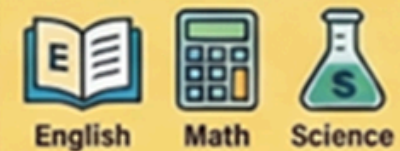
School-Based Provisions



In-class extensions and after-school enrichment programmes

Outside School

Centre-Based Advanced Modules



Weekly sessions in one subject of strength



Holiday Modules

Students can access interdisciplinary modules during the school holidays

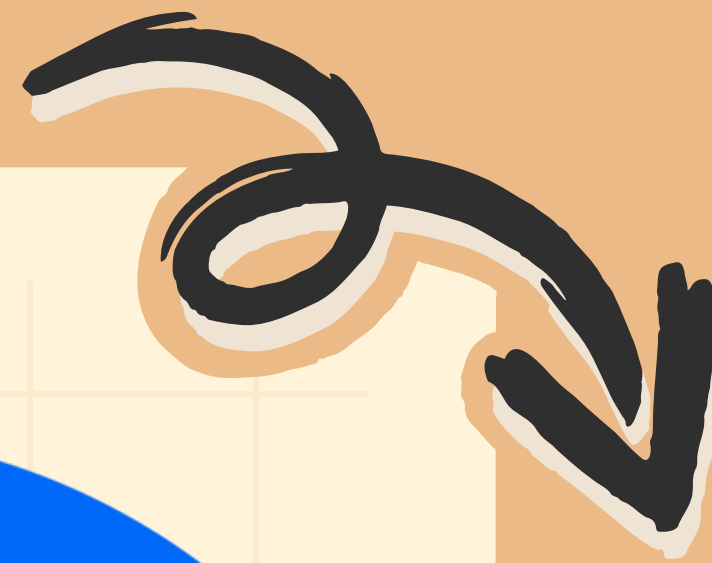
School-Based

- During/After school
- Taught by school teachers

Centre-Based

- 2-hour weekly after school
- Taught by specially trained teachers at a designated centre

ALL ABOUT PSLE



ALL ABOUT PSLE



- National exam that assesses students' learning at the end of primary education in English, Mother Tongue, Mathematics, and Science
- Gauge readiness for secondary education and place students in suitable academic pathways

Key dates for PSLE 2026

Oral Examinations	12 & 13 August 2026
Listening Comprehension	15 September 2026
Written Papers	24 September – 30 September 2026

<https://file.go.gov.sg/2026-psle-exam-cal.pdf>



PSLE SCORING SYSTEM



<https://www.moe.gov.sg/microsites/psle-fsbb/resources/score-calculator.html>

AL	Percentage Score Range (%)
1	≥ 90
2	85 - 89
3	80 - 84
4	75 - 79
5	65 - 74
6	45 - 64
7	20 - 44
8	< 20

Grades for Foundation	Foundation Percentage Score Range (%)	Equivalent Standard Level AL
A	75 - 100	6
B	30 - 74	7
C	< 30	8

Grade	Mark Range
DI (Distinction)	80 - 100
ME (Merit)	65 - 79
PA (Pass)	50 - 64
UG (Ungraded)	0 - 49

Example of how a student's PSLE Score is calculated

English Language	AL3
Mother Tongue Language	AL2
Mathematics	AL1
Science	AL2
PSLE Score: 8	



TRANSITION TO SECONDARY



Sec 1 Posting Exercise

Consider PSLE score, school culture, distance from home, CCAs, and child's interests



Posting Groups

MOE will post students to secondary school through three Posting Groups - G1, 2 or 3

Posting Groups are used for secondary school placement and to guide the initial subject levels that students can take at the start of Secondary 1.



Full Subject-Based Banding (SBB)

Greater flexibility in secondary school subjects from 2024 onwards

Direct School Admission (DSA)

Alternative path based on talents in sports, arts, or leadership



<https://www.moe.gov.sg/secondary/s1-posting/how-to-choose/what-are-posting-groups>

<https://www.moe.gov.sg/psle-fsbb/resources/transition-to-secondary-school>



STRATEGIES FOR SUCCESS



Academic Tips

- Regular self-revision
- Timed Practice with past-year papers
- Clarify doubts with teachers through consultations

Parental Support

- Build consistent routines
- Celebrate effort, not just results
- Active communication with teachers for effective home-school partnership

Well-being Matters

- Ensure your child has enough sleep and balanced nutrition
- Encourage breaks, hobbies, and family time to manage stress

Useful Tools

- <https://www.moe.gov.sg/parentkit>
- <https://www.moe.gov.sg/psle-fsbb/posting-to-secondary-school/main>



SUBJECT BASED BANDING (SBB) (PRIMARY)



SBB (PRIMARY)



SBB gives students the opportunity to take a combination of subjects at standard and foundation levels based on their strengths. This allows them to:

- Stretch their potential in subjects they are strong in
- Build up their understanding in subjects they need more help with

At the end of Primary 4, school will recommend a subject combination for Primary 5 based on student's results. Students may take:

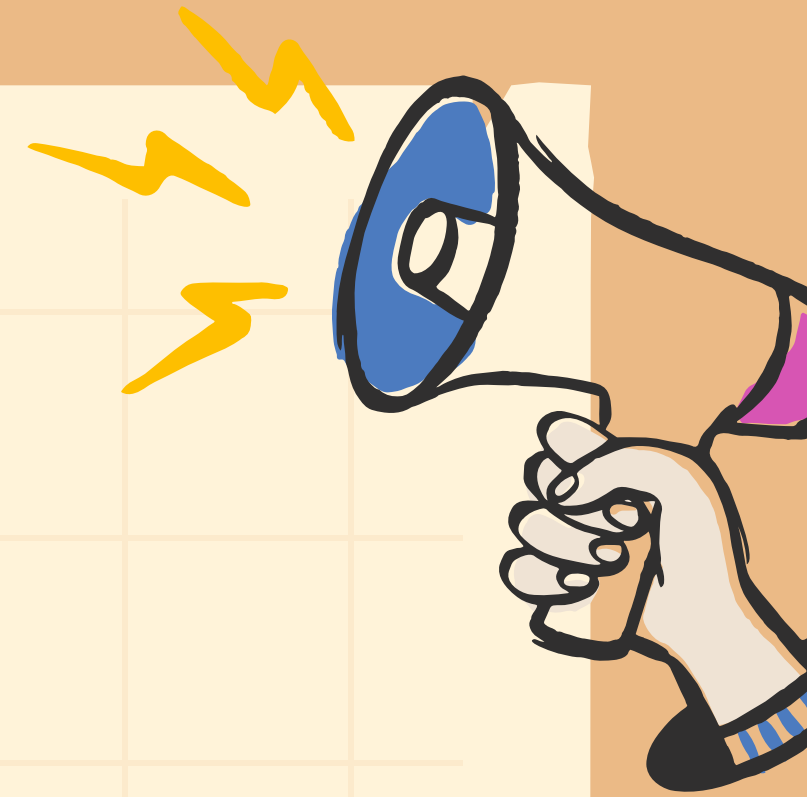
- All subjects at Standard level
- A mix of Standard and Foundation level subjects
- Higher Mother Tongue language (if they do very well for Mother Tongue Language)

Taking subjects at the appropriate levels will help students build up the fundamentals for the subject and better prepare them for progression to secondary school

<https://www.moe.gov.sg/primary/curriculum/subject-based-banding>



DIRECT SCHOOL ADMISSION (DSA)



WHAT IS DSA?



DSA-Sec provides a pathway for students to gain admission to secondary schools based on their interests, aptitude and potential, beyond their performance at PSLE.

Areas of talents may include:

- Sports and games
- Visual, literary and performing arts
- Leadership and uniformed groups
- Debate and public speaking
- Science, mathematics and engineering

Successful DSA applicants will receive a confirmed place in the secondary school, provided the student's PSLE score qualifies them for the Posting Group offered by the school.

<https://www.moe.gov.sg/secondary/dsa/eligibility>



DSA APPLICATION TIMELINE



January to May 2026	Explore school choices by visiting individual school's websites
6 May to 2 June 2026	Submit application online through DSA-Sec Portal by 4.30pm on 2 June 2026
June to August 2026	Shortlisting and selection trials/interviews by secondary schools
By 28 August 2026	Students will be informed of their application outcome
19 October to 23 October 2026	Accept / Reject DSA offers
Late November 2026	PSLE Results release

<https://www.moe.gov.sg/secondary/dsa>



IMPORTANT REMINDERS



Your child may be suitable for DSA if they:

- show strong interest and consistent performance in a talent area
- have participated in relevant competitions, performances or leadership roles
- are keen to grow in that area in secondary school

Prepare your child for interviews and/or trials confidently

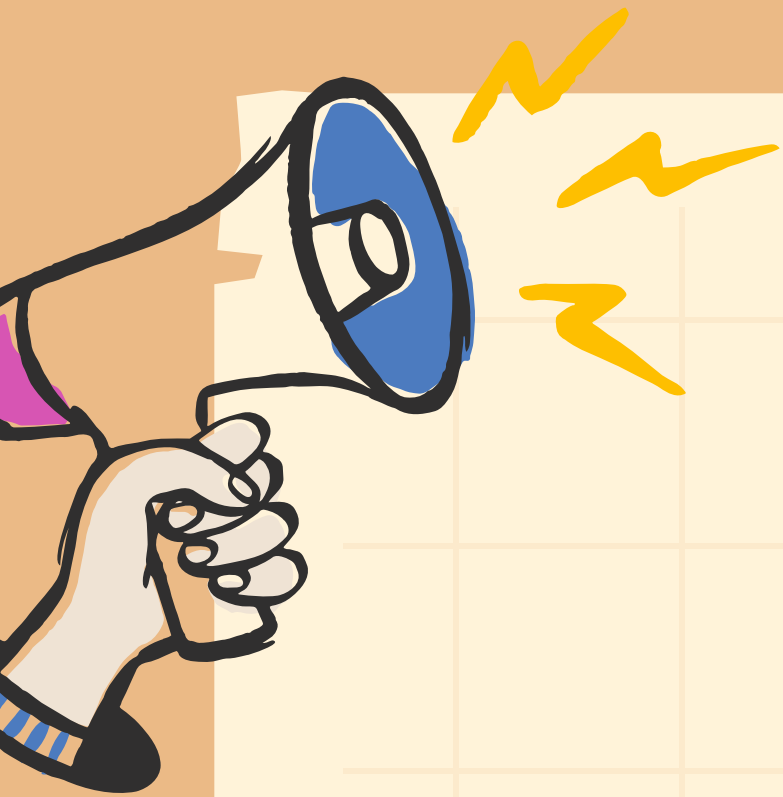
Once a DSA offer is accepted, it is binding – your child **must** join that school

Admission to DSA school is still dependent on student's PSLE score qualifying for relevant Posting Group

**NOTE: DSA schools
may have high
expectations in that
domain**

<https://www.moe.gov.sg/secondary/dsa/preferences/understand-dsa-sec-commitment>





THANK YOU!

